

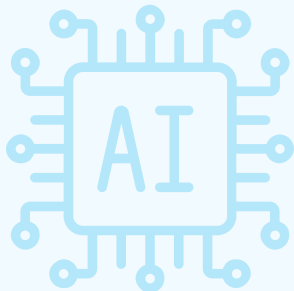
# Navigating On-Prem AI: Essential FAQs

Cloud solutions are not the only viable option for AI deployments. On-prem AI offers alternatives that shouldn't be overlooked. Here, we address some of the most common questions to help you make informed decisions about your AI strategy.

## What is required for AI infrastructure?

---

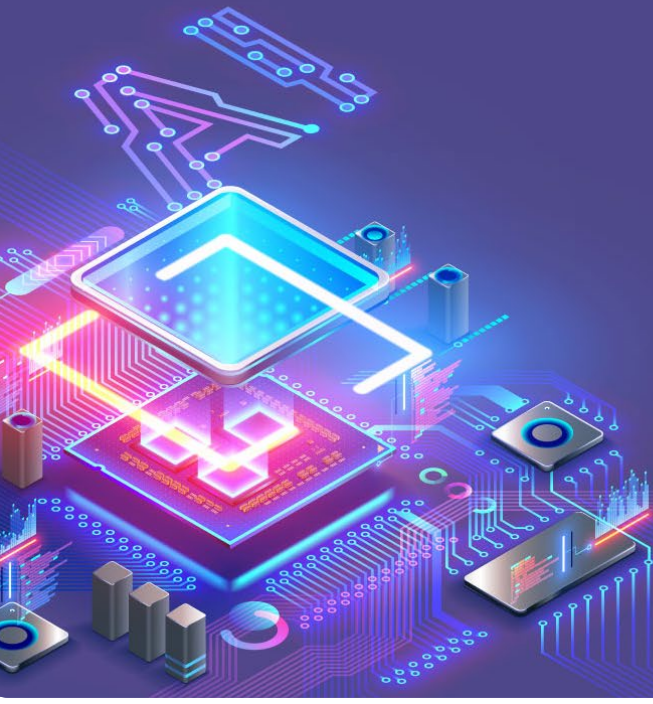
Effectively implementing AI into your business operations starts with planning, defining use cases, and building a test environment to support your needs. AI infrastructure combines high-performance servers and processors, specialized software, scalable, software-defined storage, and high-bandwidth networking. Most organizations benefit from developing a small-scale build and test environment before investing heavily.



## Does on-prem infrastructure cost more?

---

Some argue that on-prem AI infrastructure is more expensive than cloud-based solutions. However, nearly 90% of data breaches are due to human error making on-prem storage and security crucial. Initial capital costs for on-prem may be higher, but it avoids recurring costs like cloud service fees. Moreover, on-prem infrastructure scales with your needs, preventing the escalating costs of cloud-based solutions. Additionally, on-prem hardware like NVIDIA GPUs can be repurposed for other business tasks when AI demand is low.



## Can on-prem infrastructure integrate with existing technology stacks?

Yes, on-prem infrastructure can integrate with existing technology stacks, though compatibility varies. Many software solutions are designed to work with on-prem infrastructure, requiring careful architectural decisions and testing. NVIDIA NIM offers microservices that accelerate the deployment of generative AI models, and hardware solutions like Cisco FlexPod or X-Series servers can seamlessly integrate with AI software like NVAIE and NIMs, simplifying the ramp-up process.

## How can ConRes help your organization with implementation?

Implementing AI infrastructure requires specialized compute, networking, and storage. ConRes' decades of experience in infrastructure design has evolved into creating robust, scalable AI environments, with partners such as Cisco and NVIDIA. Throughout the process of identifying AI opportunities through sizing, scoping, testing and implementing solutions, our proven record of successful AI projects reduces your risk and allows you to move forward with confidence.



Experience the future of AI with **ConRes** through cost-efficiency, flexibility and unparalleled expertise. Contact us at [solutions@conres.com](mailto:solutions@conres.com).